

# Kati Huirapa Runaka ki Puketeraki

August 2006

1

Akuhata 2006

## What's Inside

**Page 2** – Nga Mate

**Page 3** – Pepi  
Birthday Photos

**Page 4** – Managers Corner

**Page 5** – Year of the  
Veteran

**Page 6** – Mo Tatou  
Ngai Tahu exhibition  
At Te Papa

**Page 7** – Photo's

**Page 8** – Congratulations

**Page 9** – Scholarships  
- Meeting notice

**Page 10** – Ceramics

**Page 11** – Waste water  
- Job Advert

**Page 12** – Envisioning  
Huirapa  
- Upcoming events



## Huirapa

Ko Hikaroroa to matou mauka  
Ko te Papatuwhenua ko Puketeraki  
Ko te awa a Waikouaiti  
Ko te moana "Te Moana Roa a Kiwa"  
Ko nga waka a Huruhurumanu, Uruao,  
Takitimu me Araiteuru  
Ko nga hapu, Kai Te Ruahikihiki, Kati Hawea,  
hoki tonu Kati Huirapa ki Puketeraki

## Happy Birthday

### Happy 90<sup>th</sup> to:

Harold Ashwell – 15<sup>th</sup> August

### Happy 80<sup>th</sup> to:

Taini Wright – 9<sup>th</sup> June  
Peggy Fraser – 13<sup>th</sup> July

### Happy 21<sup>st</sup> to:

Haines Ellison – 1<sup>st</sup> July

### Happy Birthday to:

Lu Ritchie – 4<sup>th</sup> July  
Joan Ellison – 9<sup>th</sup> July  
Mitty Ellison – 14<sup>th</sup> July  
Annie Ellison – 22<sup>nd</sup> July  
Brendan Flack – 30<sup>th</sup> July  
Mahana Walsh – 7<sup>th</sup> August  
Suzanne Ellison – 9<sup>th</sup> August



Happy birthday to all members who have  
celebrated a birthday over the past few months and  
those who will celebrate one in the coming few  
months.



# Kati Huirapa Runaka ki Puketeraki

August 2006

2

Akuhata 2006

## Nga Mate

Tim Ryan  
Harold (Bull) Leith  
Paul Hiroti  
Avon Tipa  
Bill Hiku

Haere atu rā, haere ki tua o  
te ārai.

Our thoughts and sympathy  
are with their whanau.



Tena koutou e hoa ma,

Tihei mauri mate!

Kua pouri te kakau kia whakaroko ki te karere taki o te kuia kua hika nei, o te Ariki o Tainui waka, a, ko Ta Te Atairangi Kaahu. E te Ariki, okioki mai koe, moe mai koe i te marumaru o Te Atua i ruka rawa, i roto i te awhiawhinga o to iwi whanui o te rohe o Waikato. No reira, whakaroko mai koe ki te karaka nei o Hine nui i te po. Haere e kui, haere, haere, haere atu ra.

It is very sad to hear of the passing of this great lady. I remember her arriving at Otago Museum during the mihi whakatau ceremony for the manuhiri tuaraki who had arrived for Te Rangi Hiroa's exhibition a year or so ago.

She came in a little after the start and placed herself unobtrusively in a seat near the back. Fortunately she was noticed by Khyla who uttered the karaka of welcome to her and from that point on there were mihi to her from the speakers one after the other. A remarkable understatement of mana was manifest in the way she held herself.

I also remember her hospitality to us when our Kai Tahu ope visited Ngaruawahia during the taki of Ta Bob Mahuta. She invited a number of us to lunch at her residence at the Endowment college which was a great honour to our iwi.

Mat Ellison



# Kati Huirapa Runaka ki Puketeraki

August 2006

3

Akuhata 2006

## Haere Mai Ka pepi

Congratulations to Aaron and Yoshie on the birth of their daughter Mia. Mia was born on 24 June at Osaka, Japan.

Mia is the second mokopuna for Khyla, she is a cousin to Takawai and a niece for Justine. She is a great niece to Eleanor, Raewyn, Doreen, Toni, Gael, Elliott and the late Billy and Philip.



## Did you know .....

Maori women have the world's third highest opportunity entrepreneurship rate (spotting and filling gaps in the market place).



Peggy Fraser, Lu Ritchie and Doug Stanton celebrating Peggy's 80<sup>th</sup> birthday at a surprise gathering with family and friends – a great time was enjoyed by all.



Haines, Huia Collings, John, Rua Hagan



Joy, Haines and Tama



Runaka field trip to Orokonui Ecosanctuary





# Kāti Huirapa Runaka ki Puketeraki

August 2006

4

Akuhata 2006

## Managers Corner

Tenei to mihi ki a koutou te whānau whānui o Kāti Huirapa ki Puketeraki. Tēnā tatou katoa.

What started as a 3 month transition arrangement at the rūnaka has extended into 6 months as the initial period passed in a flash of annual planning & budget drafting, working out new arrangements for Whare Mahana, reviewing the staffing structure and dealing with the day to day reality of busy life around the rūnaka. Good progress is being made & the executive will be reporting in full about these matters at the Runaka General meeting on 10<sup>th</sup> September.

The Whare Mahana team has been working hard retrofitting homes in the greater Dunedin area. There are 8 people employed on the Whare Mahana team and over the past 12 months they have retrofitted 263 homes. There have been changes to the contractual arrangements with the Energy Efficiency Conservation Authority that will make it harder for Whare Mahana financially under the new contract. This year there is an increase in the cost to the homeowner, but for the community card holder it is still a very good way to get your home insulated. Whare Mahana rates for non-community card holders are also very competitive. Another change is that Whare Mahana is seeking landlords in rural areas who have rental houses to be retrofitted. The landlords will be meeting a higher portion of retrofitting costs but it is still distinctly to their advantage to get the work done through Whare Mahana. Anyone interested in having their house assessed for retrofitting should contact Sue at the rūnaka office.

The runaka has been allocated a Otago Community Trust subsidised Task Force Green position for 6 months. The worker will coordinate opportunities for whānau members to be involved with the marae and activities of the rūnaka. This will include tautoko for the marae, maintenance of Tiakitaka, preparing the Old School bunk room as a base for the carvers, supporting whānau involvement with the Veterans Day celebrations, & many other activities. It will be a busy 6 months for our worker and we hope at the end of the time that not only have they gained work skills and confidence but that the marae & rūnaka have a momentum of increased participation that we are able to sustain.

Heoi ano

Suzanne Ellison  
**Transition Manager**



# Kati Huirapa Runaka ki Puketeraki

August 2006

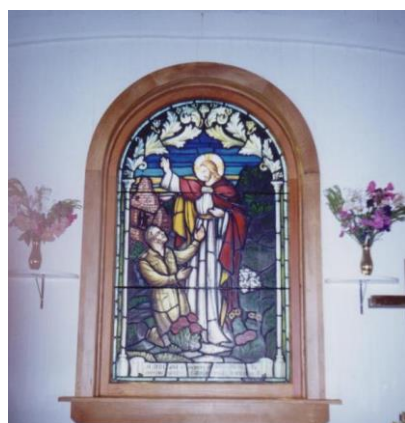
5

Akuhata 2006



Teone Matapura Ellison  
Member of the Otago  
Hussars.

This photograph was  
taken late 1800's or early  
1900's.



World War II Memorial -  
Stained glass window at  
Hui Te Rangiora Church.

## Year of the Veteran – 2006

News Bulletin 1

We are fortunate that many in our country have never known the horror of war. Those who set out to serve New Zealand in times of conflict were also perhaps unaware of the true nature of the challenges that lay ahead. However, their courage and determination in the face of these challenges remains an inspiration to all.

The Year of the Veteran is the time for all communities to stand up and say 'thank you' to veterans.

The government will present a special year of the Veteran Certificate of Appreciation and Lapel Badge, as an expression of appreciation to those who have served New Zealand in a recognised war or emergency. Every veteran of a recognised war or emergency is eligible for this recognition.

To recognise veterans of Kati Huirapa Runanga ki Puketeraki, Karitane and District in the "Year of the Veteran" we have the following programme in preparation:

## Remembrance Day – 11 Novembers 2006

1. Wreath laying, parade, honour guard at Old School Memorial Gates
2. Powhiri at Puketeraki marae
3. Dinner
4. Speeches, Medal presentations, NZ Government Certificates of Appreciation to veterans and deceased veterans families, items
5. Afternoon tea / social.

At least 30 campaign medals will be formally presented to vets of Japan, Korea, Malaya and Vietnam. Also 70 Certificates of Appreciation to vets and vets next of kin. More details later. David Ellison (Convenor) 03 465 7729.

# Kāti Huirapa Runaka ki Puketeraki

August 2006

6

Akuhata 2006

## Mō Tātou – The Ngāi Tahu exhibition at Te Papa

On Saturday the 8<sup>th</sup> of July Kāti Huirapa Rūnaka ki Puketeraki were well represented at the opening of Mō Tātou. Around 50 of our whanau living in Wellington, the Wairarapa, Wanganui and other parts of Te Ika a Maui gathered together with those of us who had traveled from throughout Te Waipounamu for this occasion. Our whanau helped make up the biggest turnout that has ever been experienced for the opening of an Iwi exhibition.

The very early start to the day, the huge crowd gathering in the early morning, the solemnity of the whakawaatea, the kororero of the powhiri, the parakuihi served on 3 floors of Te Papa, the many korowai being worn, the clunking of multiple pounamu pendants, catching glimpses of whanauka & friends but not being able to find them again in the crowd, all of these impressions and much more made being in Wellington for the opening of Mō Tātou a memorable time for everyone.

For some it was a weekend of firsts, the first time they had been part of a traveling roopu, the first time they had slept on a marae, the first time they had attended a dawn opening, and for all of us it was the first time we had been in the company of so many Kai Tahu at the same time.

We will be putting together a runaka 'scrap book' of photos & memories from as many of us who were at Te Papa as possible. It's not too late to send in your comments & photos for inclusion – we want to hear from everyone. Following are a few photos and impressions received so far.



Pipitea Marae







### The Huirapa Van Trip to Wellington & Back – Rachel Ruckstuhl-Mann

“Breaking down on the last hill before Palmerston, ...eating titi & whitebait with eggs and croissants with the sun on the harbour rising...singing and dancing, and clapping and laughing...sleeping squashed in a van...”



### Taini Wright

“Going to Te Papa was extra special for me. It was noted by the weavers that my Kiwi Kakahu needed some urgent repair attention. Ranui Ngarimu did a wonderful job – absolutely.”

Koa Whitau “personally it was reminiscent of when we hosted Te Maori Exhibition here in Dunedin, Te Kereme hearings, the final readings at Parliament, the march in Wellington, all historical events that impact on our future.”



Caroline Ruckstuhl, Peggy Fraser and Phyllis Smith at Te Papa.



Wi Te Tau, Wiki Te Tau, Caroline, Peggy and Phyllis

# Kati Huirapa Runaka ki Puketeraki

August 2006

8

Akuhata 2006

## Congratulations

Kotahi Parata for being selected for the Otago Metro Under 13 Rugby team.

---

Aroha Mules who has won a Yamada O'Reagan secondary scholarship.

---

Waimarie Parata for being selected for the Otago Metro Under 11 Rugby team.

---

Christopher Preddy who represented South Otago in the NZ Under 18 Indoor Bowls at Christchurch. Christopher got 3<sup>rd</sup> Overall. Well done.

---

## Watch out for:

Shane Parata playing rugby for Otago B

---

## National Secondary Schools Kapahaka Nationals

On July 18 Tawini White (TeRaki/Miller whanau) performed with her ropu - Te Ropu Ara Whanui from Northland College at the National Secondary Schools Kapahaka Nationals at Mystery Creek.

It is a big honour to be selected for the Nationals; only two ropu (groups) from each region are able to go through and this was the first time Northland College has made the selection.

Although Tawini was only one of two year 9 girls to be included, that didn't daunt her and she thoroughly enjoyed the experience. Tawini hopes to be able to compete again in the future.



## Taiaha Wananga – Koukourarata

Labour Weekend – 19<sup>th</sup> – 23<sup>rd</sup> October 2006.

**Contact** – Raelyn TeMoni

03 373 8150 or 027 286 5970

Email – [raelyn@hewakatapu.org.nz](mailto:raelyn@hewakatapu.org.nz)

**No Registrations accepted after Friday 6<sup>th</sup> October.**





# Kati Huirapa Runaka ki Puketeraki

August 2006

9

Akuhata 2006

## **Papatipu Rūnaka Scholarship**

Congratulations to the latest recipients of the Papatipu Rūnaka Scholarship.

This year the scholarship is being shared between 3 runaka members John Broughton, Te Kore Chisholm and Rangimarie Mules. John has returned to study and is working towards a PhD in Dentistry, Te Kore has taken up the challenges of tertiary study more recently and is working towards a BA in Maori Traditional Arts (whakairo). Rangimarie is studying towards a BA (Hons) in Maori & Anthropology.

All three recipients are actively involved and contribute to runaka activities. We wish them well in their studies.

---

## **Did you know.....**

18% of Maori entrepreneurs claim to be using the very latest technology compared to 10% of the New Zealand general population of entrepreneurs.

## **Otago Polytechnic Runaka Scholarships**

Congratulations to Ewan Duff and Rose McLeod who were the recipients of the first full fees scholarships given by Otago Polytechnic for the runaka to award.

Ewan has contributed to the runaka and marae over many years. In more recent times he represented the runaka on the Pounamu Management Group, the group responsible for writing the Pounamu Resource Management Plan and currently Ewan is one of our representatives for the redevelopment of Kai Tahu section of the Otago Settlers Museum. Koru NZ Art & Jade is a business that Ewan established a few years ago where he produces toaka for sale. At Otago Polytech he is studying for the National Diploma in Counselling, incorporating National Certificate in Social Services.

We first got to know Rose just 3 years ago when she shared the Kai Tahu Artist in Residence at Otago Polytechnic School of Art with Tania Todd. At that time Rose was living on Waiheke Island. As a result of that first small residency Rose sold her home on Waiheke, enrolled at Art School and completed a Bachelor of Fine Art. She has now been admitted to the Master of Fine Arts programme and has recently bought a new home in Port Chalmers. Since coming south Rose has really enjoyed exploring and finding out about her whakapapa, she has appreciated getting to know whanau & hapu members, and being involved with runaka activities.

---

## **Marae and Church Reserve Trustees Meeting**

10 September 2006 - 10am

Meeting is called with beneficial owners about adopting a charter.  
Hawea Ellison – Chairperson

## **Runaka General Meeting**

10 September - 11am

- Representatives Reports
  - Annual plan
  - Budget
  - Archives Project
  - Marae adornment
  - Veterans project

To elect directors to Whare Mahana Limited  
Adoption of Puketeraki Limited constitution.

## **Pot Luck Lunch**



# Kati Huirapa Runaka ki Puketeraki

August 2006

10

Akuhata 2006

## Email addresses

If you would like to receive information via email, please contact the office with your email details.

---

## Panui

If you have any contributions towards the newsletter or for Te Panui Runaka please contact Sue on 465 7300 or [sue@puketeraki.co.nz](mailto:sue@puketeraki.co.nz)

---

## Riwai Planting

Watch out for another Riwai garden day in the next month.

This is to prepare for planting later in the year.

Panui will be sent out at a later date with further details.

---

## Did you know .....

About 25.0% of Maori versus 13.1% of the general population say they expect to launch a start-up business in the next three years.

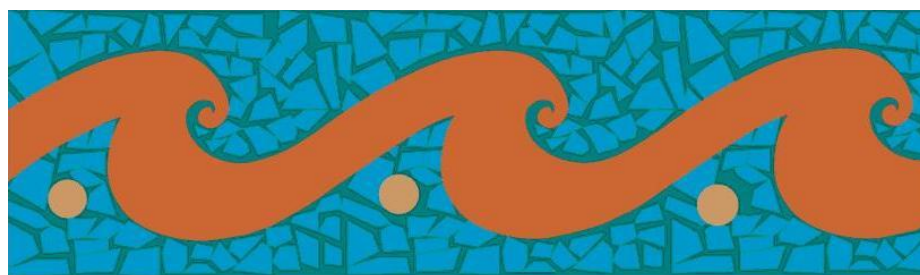
## Ceramics Wanaka

For all those who attended the Ceramics Wanaka earlier in the year, there will be a follow up to this on Sunday 3rd September to apply slip made of Kokowai (the ochre found on Huriawa peninsula).

Time: 10am -4pm

Equipment: small-medium sized paint brush, old clothes and/or apron, rubber gloves, a plate of finger food to share.

Please contact the office by 31 August to let us know if you will be attending and for more information.



# Kati Huirapa Runaka ki Puketeraki

August 2006

11

Akuhata 2006

## **RAIL TRAIL: KYEBURN/KOKONGA HOLIDAY HOUSE FOR RENT**

Our holiday house is set on 2.3 acres surrounded by farmland. It has a stream at the back and many excellent fishing spots close by.

- 15 minutes to Ranfurly 20 minutes to Naseby
- Everything supplied except linen and food
- Sleeps 6
- Pets welcome

Available all year round.



\$50 per night (2 adults, 2 children)

Phone Denise or Bruce on  
(03) 481 7117

## **Eco Waste Water Recycling Systems**

This has been developed by Don Sorenson (Moeraki) who currently lives in the Hawkes Bay.

This system has been approved for use in the Auckland region without the need for consent. It is in use at YHA hostels and in domestic homes.

This system is designed to save water and prevent overloading of septic tank leach fields by recycling selected waste water back through the toilet system. Only waste water from the shower, bath and washing machine is used.

This saves flushing good clean water down the toilet, resulting in considerable water savings. It also reduces the amount of water in the septic tank, thus reducing leach field odours.

To find out more about this product visit the website [www.ecoplus.co.nz](http://www.ecoplus.co.nz) or phone (06) 870 0046.

## **Ngāi Tahu Māori Law Centre**

Staff Solicitor

Ngāi Tahu Māori Law Centre is a Community Law Centre that provides free legal advice within Articles I and II of the Treaty of Waitangi to all Māori people living in the Ngāi Tahu rohe. The primary focus of the Centre is provision of information, advice and representation in the areas of Māori Land Law. The position is based in Dunedin, although there are opportunities to travel throughout the Ngai Tahu rohe.

We invite applications from persons who have been recently admitted to the Bar. Applicants who are keen to work with Māori and their land will find this a challenging and rewarding position.

Applications close 5.00pm Wednesday 6 September 2006.

For a confidential enquiry, please contact:

Joy Smith  
PO Box 633  
Dunedin  
Telephone (03) 477 0855  
Email: Joy.Smith@ngaitahu.iwi.nz





August 2006

12

Akuhata 2006

### Upcoming Events

#### Arts Hui

Saturday 26 August to  
Sunday 27 August  
Huirapa Marae

#### Ceramic Hui

Sunday 3 September  
10am  
Huirapa Marae

#### Sunday 10 September

**Marae Trustees Meeting**  
10am  
Huirapa Marae

#### Runaka General Meeting

11am  
Huirapa Marae

#### Hui Te Rangiora Church

A service is held on the  
fourth Sunday of every  
month at 10 am.

**Everyone welcome.**

### Envisioning Huirapa

Noho Marae

**26<sup>th</sup> 27<sup>th</sup> August 2006**

10.30 Mihi Whakatau – please be prompt to welcome our  
Manuhiri

This hui is to gather final input for the designs for the outside of the  
wharenuui, including the Waharoa/Gateway and the inside of the  
Porch.

The feedback we have received from Whanau has indicated  
positive support for the concepts presented for these parts of the  
Wharenuui, therefore, these are the parts we will be continuing on  
with. These concepts were not the final designs though, and that's  
where we would like your help to move through to the next phase.  
We want your input into what these parts of the Marae could finally  
look like

Please bring any examples of work you have done in the past, any  
examples of work you like, have seen or admire, so that we can  
create a visual picture of everyone's tastes and ideas. These  
examples could be physical works, photos or photocopies, videos  
or CDs.

We are inviting Ross Hemara, a Kai Tahu sculpture who works  
with wood and metal, to help us to envision and possibly design  
these elements at the Wanaka.

Please bring a plate for supper or afternoon tea,  
sleeping gear, creative thinking caps, and an open mind!

**RSVP by August 23<sup>rd</sup> for catering purposes**